



The Refrigeration Experts

# Service Manual

ECOPRO

## **GE** Counters

EP1/2H, EP1/2HRW, EP1/2M, EP1/2L  
EP1/3H, EP1/3HRW, EP1/3M, EP1/3L  
EP1/4H, EP1/4HRW  
EP2/2H, EP2/3H



# Three Steps

to maintain and service your appliance



The Refrigeration Experts

Welcome to your **interactive** Foster service manual.

## Here's how it works:



To return to the contents at any point, click on the Foster logo at the bottom of every page.



**Operating Instructions**

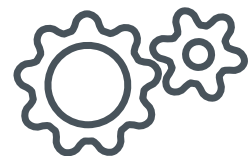


**Service Function**

- Parameters
- Alarm Indicators
- Probe Data
- Relay Test
- Factory Reset
- Wiring Diagrams



**Maintenance**



# General Information



All installations must conform to local and municipal regulations and directives. In the case of doubt contact a Foster authorised dealer or the Foster Technical Department. The information contained in this manual is current at the time of publication and is subject to change without notice.

## Climate Class

Climate class indicated on the serial plate shows the ambient temperature & humidity at which this appliance has been tested, for the purposes of establishing values in line with European standards.

Climate Class	Temperature	Relative humidity
4	30°C	55%
5	40°C	40%

## General Safety

- Do not store explosive substances such as aerosol cans with a flammable propellant in this appliance.
- Keep all ventilation openings in the appliance or in the structure of a built in unit clear of any obstructions.
- Do not use electrical appliances inside the storage compartment.
- Do not use steam cleaners, pressure washers or other jets/sprays of water on or around the appliance.
- The appliance is air tight when the door or drawers are closed therefore under no circumstances should any living body be stored or 'locked in' the appliance.
- This appliance is heavy. When moving the appliance care should be taken and correct safe practices followed. The appliance should not be moved over uneven surfaces.
- The emitted sound level of this appliance is not greater than 70dB(A).
- To ensure stability the appliance should be located on a flat, level surface, correctly loaded.
- Do not use mechanical devices to accelerate the defrost process.
- The worktop should not be sat or stood on.
- Where the appliance is fitted with drawers these should not be used as a step to assist or gain height.
- Where the appliance is fitted with drawers, do not sit or stand in the drawers.
- Care should be taken not to damage the refrigeration circuit and/or system.
- If the supply cord is damaged, it must be replaced by the manufacturer, it's service agent or similarly qualified persons in order to avoid hazards.
- Care should be taken to avoid prolonged contact with cold surfaces with unprotected body parts, correct PPE to be used at all time.



## Disposal Requirements

This appliance contains components and materials which can be harmful to the environment if not disposed of correctly. Disposal of this appliance should be carried out by a suitably licensed waste contractor in accordance with national laws and regulations which may be in force at the time.




## Electrical Safety


Foster Refrigerator recommends that the equipment is electrically connected via a Residual Current Device; such as a Residual Current Circuit Breaker (RCCB) type socket, or through a Residual Current Circuit Breaker with Overload Protection (RCBO) supplied circuit.





## Locating the appliance


After unpacking, clean (cleaning directions supplied within this manual) and allow the appliance to stand for 60 minutes before turning on.

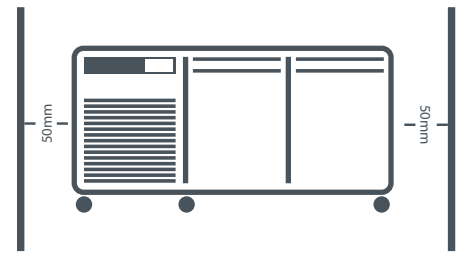
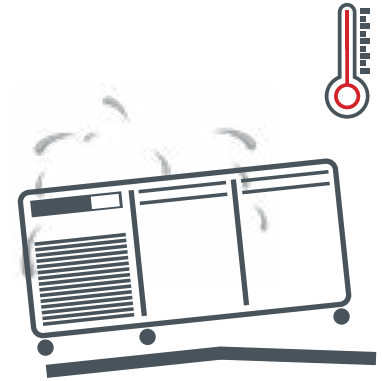
 Ensure the appliance is situated on a firm, level surface, away from both hot and cold air sources, as this will affect its performance.

 Place the appliance in a location so as not to exceed the maximum rated ambient temperature.

 The appliance produces warm air when operating normally and requires adequate ventilation. The dimensions indicated are a minimum.

 Connect the appliance to a suitable power supply. Do not connect or disconnect the appliance with wet hands. The appliance will turn on automatically displaying the actual internal temperature of the appliance. If this does not happen and button 3 is 'pulsing' press and hold button 3 for 3 seconds to turn on the appliance.

 As the operating temperature has been pre-set no adjustments are required. Allow the appliance to reach its normal operating temperature before loading with product.

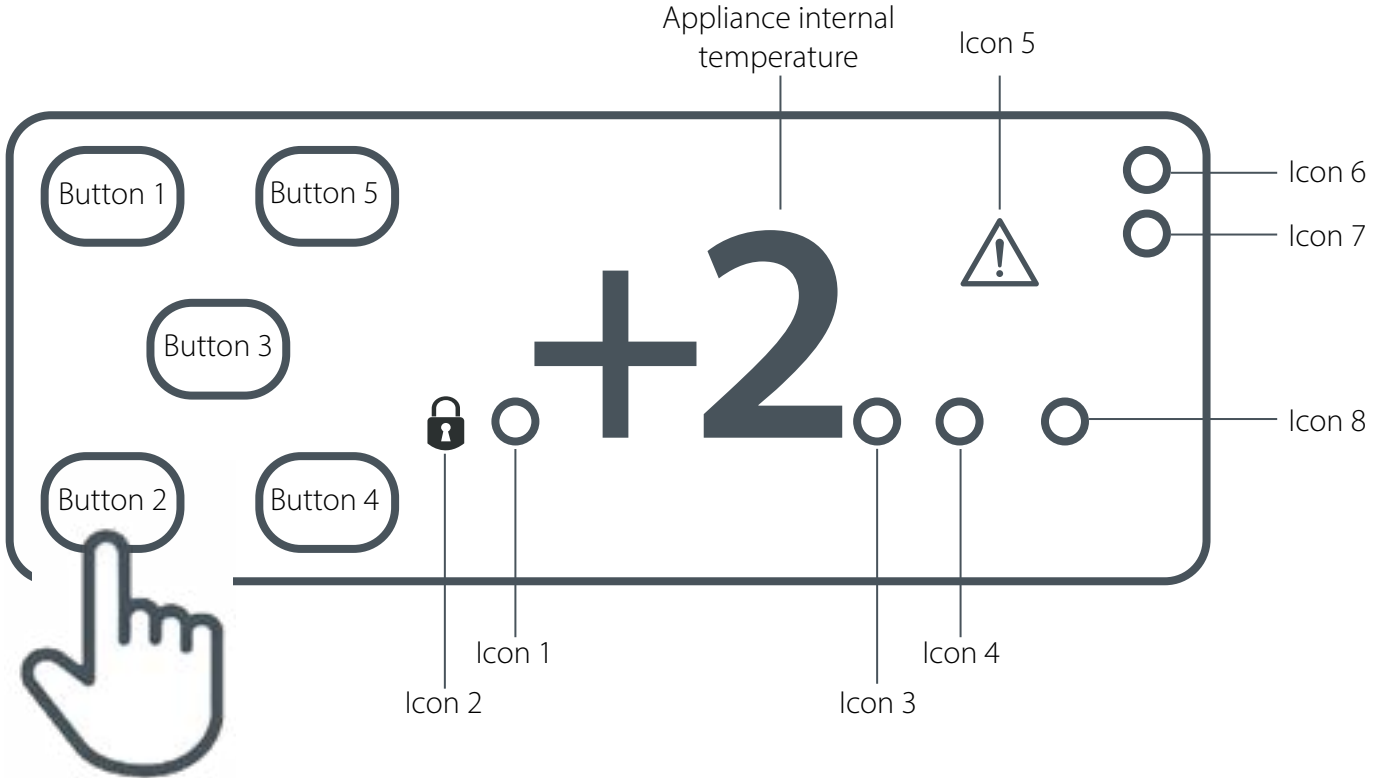


# 1

## Operating Instructions



### Display Icons and Buttons



Icon		Button	
1	Compressor running	1	Information menu
2	Keypad locked	2	Increase value
3	Evaporator fans running	3	Standby/Exit/Confirm
4	Defrost in progress	4	Decrease value
5	Alarm	5	Light (If fitted)
6/7	Display units Centigrade or Fahrenheit		
8	Auxillary output operation		

Note - Buttons 1, 2, 4 and 5 are only visible after pressing button 3

### Standby

Pressing button 3 for 3 seconds will turn the unit on or into standby. When in standby, only button 3 will be displayed. The remainder of the display will be blank. When operating normally, the display will show the internal temperature and button 3.

## Set Point

To display the appliance Set Point, with the display showing the temperature, press button 3. Then press button 1 and with the display showing 'SP' press button 3.

To amend the Set Point press button 3. Then press button 1 and with the display showing 'SP' press button 3. Adjust using button 2 and button 4. Press button 3 to save the new value. If button 3 is not pressed the new value will not be stored.

If the Set Point cannot be adjusted to the value required please contact your authorised Foster dealer for advice.

The display will reset after 30 seconds or by pressing button 1.

## Keypad Security Settings

We advise that this function is used to prevent unauthorised adjustment of the appliance and it's operating temperature.

Press and release button 3. Then press button 1 followed by button 4 to display 'Loc'. Press button 3 and use buttons 2 and 4 to change the value to 'Yes' to lock the keypad or 'no' to unlock it. Press button 3 to save the new value. If button 3 is not pressed the new value will not be stored.

The display will reset after 30 seconds or by pressing button 1.

## Defrost

The appliance has an automatic defrost function and will defrost periodically each day without any user intervention. This process is normal and does not affect product stored in the appliance. During defrost the appliance can be used as normal.



## Shelves, Supports, Loading and Air Flow

The appliance is supplied with adjustable, removable trayslides and shelves.

Each shelf is capable of holding up to 40kg of product evenly distributed.

Do not block air vents with product. A minimum of 25mm should be maintained between the top of the product and the shelf above.

Do not place product on the base of the appliance. If it is required to store product on the base of the appliance please contact the Foster parts team to purchase the necessary shelf and spacers.

Always ensure air can circulate around/through the stored product. It is important that for optimal energy performance that adequate airflow is maintained around the perimeter of the shelves, and around all stored products.

Where the appliance is fitted with drawers these should not be used as a step to assist or gain height.

Where the appliance is fitted with drawers, do not sit or stand in the drawers.



## Door Lock

To lock the door insert the key and turn 90°, turn in the opposite direction to unlock.



## Internal Light (Applicable to models with glass doors)

The light is operated using button 5. Press once to turn on the light and press again to turn off the light.



# 2

## Service Function



### Controller Menu's

The controller contains 2 menu levels, user level and service level.

### User Level Menu

To access user level settings, press button 3 and then press button 1. The display will show 'SP'. Use buttons 2 and 4 to display the parameter required. Press button 3 to display the current value. If it is required to amend the value use buttons 2 and 4 followed by button 3 to save the new value.

### User Level Parameters

<b>Mnemonic</b>	<b>Description</b>
SP	Appliance Set Point
Loc	Keypad Lock
tA	Actual air probe value
tE	Actual evaporator probe value (Not enabled on all models)
tLo	Minimum air temperature during previous 24 hours
tHi	Maximum air temperature during previous 24 hours
dEF	Time until next scheduled defrost. Displayed in tenths of hours. For example 05.4 = 5 hours 40 minutes
tdy	Display resolution

## Service Level Menu

To access service level menu, press button 3 then press and hold buttons 2 and 4 for 5 seconds and the display will show 'MDL'. Press button 3 to display the current value. If it is required to amend the value use buttons 2 and 4 followed by button 3 to save the new value.

## Service Level Parameters

Mnemonic	Description	
MDL	Do not adjust	
SPL	Minimum limit for SetPoint setting	
SPH	Maximum limit for SetPoint setting	
SP	Setpoint	Temperature value to be maintained in the product
HY0	Thermostat OFF -> ON differential	In Cooling Mode - 'MDL' = 'HYS'
HY1	Do not adjust	
CMD	Compressor start delay 'run' mode	The time between mains power being applied and the compressor starting when in 'run' mode (i.e. following a mains power cut)
CRT	Compressor rest time	Minimum time compressor is switched off following cycle operation (i.e. pull down, hot gas defrost)
CT1	Compressor output on time	Followed by 'CT2' when probe Ta (T1) is faulty
CT2	Compressor output off time	Followed by 'CT1' when probe Ta (T1) is faulty
PB	Do not adjust	
IT	Do not adjust	
DT	Do not adjust	
CT	Do not adjust	
AR	Do not adjust	
CMS	Do not adjust	
CRS	Do not adjust	
CRD	Do not adjust	
CDS	Do not adjust	
CFF	Do not adjust	
CSS	Do not adjust	
CSO	Do not adjust	
CST	Do not adjust	
DFM	Defrost start mode Defrost start mode	'NON' - defrost function is disabled - no defrosts will occur
		'TIM' - Time. Defrosting occurs on a time base determined by 'DFT', accumulated only in run mode
		'FRO' - Do not use
		'DoD' - Do not use
		'TAD' - Do not use
DFT	Time interval between defrosts	When this time has elapsed since the previous defrost (in run mode), a new defrost cycle is initiated
DSP	Do not adjust	
DST	Do not adjust	
DMI	Do not adjust	
DLI	Defrost end temperature	
DTO	Maximum defrost duration	
DTY	Defrost type	'OFF' - Off cycle defrost (Compressor and Heater OFF)
		'ELE' - Electric defrost (Compressor OFF and Heater ON)
		'GAS' - Hot gas defrost (Compressor and Heater ON)
DSY	Defrost start synchronization	'OFF' - none. The defrost will occur without delay
		'LO' - defrost start will be postponed to compressor cut-out (SOD = max delay)
		HI' - defrost start will be postponed to compressor cut-in (SOD = max delay)
SOD	Do not adjust	
DPD	Evaporator pump down	At the beginning of defrost, defrost outputs (determined by 'DTY') are 'OFF' for 'DPD' seconds
DRN	Pause after defrost (evaporator drain down time)	
DDM	Defrost display mode.	RT' - the real / actual temperature
		LT' - the last temperature displayed before defrost initiation
		SP' - the setpoint value
		dEF' - 'dEF'



DDY	Display delay	The display shows the information selected with parameter 'DDM' during defrost and for 'DDY' minutes after defrost termination
FID	Evaporator Fans in defrost	YES - Fans active during defrost and drain ('DRN') and recovery / NO - Fans off during defrost and drain ('DRN') and recovery (fan start based on 'FDD' or 'FTO' - whichever first)
FDD	Evaporator fan re-start temperature after defrost	
FTO	Maximum evaporator fan stop after defrost	
FSD	'Evaporator fan stop delay after door opens	Time in seconds: '-1' = fan(s) do not stop / '0' = fan(s) stop instantaneously / '1'-'900' = fans stop after prescribed time elapses
FCM	Thermostatic control fan mode	'NON' - The fans remain ON all the time (subject to door switch operation and defrosts).
		'TMP' - Temperature-based control. The fans are ON when the compressor is ON. When the compressor is turned OFF, the fans remain ON as long as the temperature difference $T_e - T_a$ is greater than 'FDT'
		'TIM' - Timed-based control. The fans are ON when the compressor is ON. When the compressor is OFF, the fans switch ON and OFF according to parameters 'FT1', 'FT2' and 'FT3'
FDT	Evaporator fan compressor stop over-run	Where Evaporator ( $T_e$ ) -Air ( $T_a$ ) temperature difference for the fans to turn OFF after the compressor has stopped
FDH	Temperature differential for fan re-start	Example: 'FDT' = '-1' and 'FDH'=3'. If compressor is stopped, the fans are OFF when $T_e > T_a -1$ ('FDT'), whereas the fans are ON when $T_e < T_a -4$ ('FDT'-'FDH')
FT1	Fan stop delay after compressor stop	
FT2	Timed fan stop	When 'FT2' = '0' the fans remain on all the time
FT3	Timed fan run	When 'FT3' = '0', and 'FT2' > '0', the fans remain OFF all the time
ATM	Alarm threshold management	'NON' - all temperature alarms are inhibited (the following parameter will be 'ACC')
		'ABS' - the values programmed in 'ALA' and 'AHA' represent the real alarm thresholds
		'REL' - the alarm threshold is obtained by the sum of setpoint, thermostat differential and 'ALR' / 'AHR'
ALA	Low temperature alarm threshold	
AHA	High temperature alarm threshold	
ALR	Low temperature alarm differential	With 'ALR' = '0' the low temperature alarm is excluded
AHR	High temperature alarm differential	With 'AHR' = '0' the high temperature alarm is excluded
ATI	Probe used for temperature alarm detection	
PAD	Delay before alarm temperature warning at power on	
ATD	Delay before alarm temperature warning	
ACC	Condenser periodic cleaning	When the compressor operation time, expressed in weeks, matches the 'ACC' value programmed, 'CL' flashes in the display. With 'ACC' = '0' the condenser cleaning warning is disabled
ECO	Do not adjust	
ESP	Do not adjust	
EH0	Do not adjust	
EH1	Do not adjust	
EPB	Do not adjust	
EDM	Do not adjust	
EDF	Do not adjust	
EDL	Do not adjust	
EDO	Do not adjust	
EDR	Do not adjust	
EFD	Do not adjust	
EFT	Do not adjust	
EFC	Do not adjust	
ESD	Do not adjust	
EFS	Do not adjust	
EMF	Do not adjust	
DSM	Door switch mode	'NON' - when 'DI1'/'T3A' = 'DOR' there is no response to a state change
		'ALR' - when 'DI1'/'T3A' = 'DOR' and the digital input is ON, an alarm is generated after 'DAD' minutes
		'STP' - when 'DI1'/'T3A' = 'DOR' and the digital input is ON, in addition to the alarm, the fans are stopped according to FSD and the compressor is stopped after 'CSD' seconds

DAD	Delay before door open alarm warning	
CSD	'Relay 1' stop delay after door open	'0' ... '900' - time in seconds ('-1' = 'Relay' does not de-energise / '0' = instantaneous / '1'-'900' = de-energises after prescribed time elapses)
DOT	Door stop override	If the door switch remains open for longer than 'DOT' minutes, the operating functionality returns to normal thermostatic control, however the alarm will remain. When 'DOT' = '0', this function is disabled
DI1	'DI1' digital input	'NON' - Digital Input 1 not active
		'DOR' - door input
		'ALR' - when the input is activated (set by 'D1A') alarm 'Alr' alarm is generated, the compressor is stopped and the defrosts are suspended
		'ECO' - Do not use
D1A	'DI1' activation	'RDS' - Do not use
		'OPN' - on open
LCM	Light control mode	'CLS' - on close
		'NON' - light output not controlled
		MAN' - light output controlled through display operating button (when 'SR1', 'SR2' or 'RL2' = 'LGT')
		'ECO' - Do not use
		'DI1' - Do not use
		'NI1' - Do not use
SR1	SSR1 output operation	'DI2' - Do not use
		'NI2' - Do not use
		'NON' - Relay output disabled (always Off/Open)
		'LGT' - Output enabled for light control
		'0-1' - Relay contacts follow the on/standby state of controller
		R1' - Do not use
		'R1F' - Do not use
		'-R1' - Do not use
		'FAN' - Output enabled for evaporator fan switching
		'-FAN' - Do not use
		'DEF' - Output enabled for defrost switching
		'-DEF' - Do not use
SR2	SSR2 output operation	'ALO' - Contacts open when an alarm condition occurs
		'ALC' - Contacts make when an alarm condition occurs
RL2	RL2 output operation - same operations and selection as 'SR1'	'ACP' - Do not use
		'AFH' - Do not use
ACN	Do not adjust	
ACF	Do not adjust	
AHS	Do not adjust	
AHU	Do not adjust	
AFT	Do not adjust	
PMD	Do not adjust	
MSV	Do not adjust	
2CD	Do not adjust	
SB	Stand-by button enabling	
BOS	Button Operation Sounder	YES' provides positive feedback (i.e. 'beep') every time a display button is pressed, 'NO' sounder is silenced during display button operation
RHC	Do not adjust	
OSA	Probe T <sub>Air</sub> (T1) offset	
TE	Probe T <sub>Evaporator</sub> (T2) enabling	
OSE	Probe T <sub>Evaporator</sub> (T2) offset	
T3A	DI2 / T <sub>Auxiliary</sub> Probe Enabling and Operation	'NON' - DI2 / Auxiliary probe not fitted
		'DSP' - Auxiliary Probe - general purpose temperature measurement (i.e. stored product temperature)
		'CND' - Condenser probe - if measure temperature exceeds value of 'AHT' controller will react as defined by 'AHM'
		'2EU' - Do not use
		'DOR' - Digital Input 2 used for door switch operation
		'ALR' - Do not use
		'ECO' - Do not use
		'RDS' - Do not use

OS3	Auxiliary Probe 3 offset	
D3A	'DI3' activation	'OPN' - on open 'CLS' - on close
AHM	Operation in alarm when 'T3A' = 'CND'	'NON' - Audible and visual alarm is inhibited 'ALR' - when 'T3A' = 'CND' and temp. > 'AHT' condenser high temperature 'HC' alternates in the display and the alarm sounder is activated 'STP' - in addition to the alarm signal, the compressor is stopped and defrosts are suspended
AHT	Condenser temperature alarm (referring to Tauxiliary probe)	
TLD	Delay for minimum temperature ('TLO') and maximum temperature ('THI') logging	With 'TLD' = '0' the logging is disabled
TDS	The temperature probe value to be displayed	'TA' - actual Tair (T1) value 'TAS' - actual Tair (T1) value slowed (rate of change toward setpoint = actual value, away from setpoint = mathematical algorithm applied) 'A-E' - the AVG-weighted average between Tair (T1) and TEvaporator (T2) probes 'T3' - Tauxiliary (T3) probe value (when 'T3A' = 'DSP', 'CND' or '2EU')
SIM	Display slowdown.	Active when 'TDS' = 'TAS', the SIM value is the controlling arithmetical value.
AVG	The relative weight of T2 in respect of T1 (when 'TDS' = 'A-E')	
SCL	Readout scale	'°C' with non adjustable resolution in User Function Menu '°C' with adjustable resolution in User Function Menu '°F' with non adjustable resolution in User Function Menu '°F' with adjustable resolution in User Function Menu
PRT	Modbus communication type	RTL or ASCII
ADR	FD1-19 address for PC communication	
RFP	Return to Factory Parameters.	Allow options through 'User Menu' to reset all controller parameters to factory production values where controller has been programmed by Foster

# Parameter Settings

Mnemonic	Default	INTEGRAL				REMOTE	
		High Temperature Counter Solid Doors	High Temperature Counter Glass Door	Meat Temperature Counter Solid Doors	Low Temperature Counter Solid Doors	High Temperature Counter Solid Doors	Low Temperature Counter Solid Doors
MDL	HYS	HYS	HYS	HYS	HYS	HYS	HYS
SPL	-2	1	1	-2	-23	1	-21
SPH	10	5	5	5	-15	5	-15
SP	3.5	2	2	-2	-23	2	-21
HY0	3	3	3	3	3	3	3
HY1	0	0	0	0	0	0	0
CMD	30	5	5	5	5	0	5
CRT	90	180	180	180	180	0	0
CT1	4	4	4	5	5	4	5
CT2	7	6	7	5	5	6	5
PB	7	5	5	5	5	5	5
IT	100	100	100	100	100	100	100
DT	0	6	6	6	6	6	6
CT	10	5	5	5	5	5	5
AR	75	70	70	70	70	70	70
CMS	100	100	100	100	100	100	100
CRS	35	90	90	90	90	90	90
CRD	15	10	10	10	10	10	10
CDS	50	60	60	60	60	60	60
CFF	60	60	60	60	60	60	60
CSS	60	60	60	60	60	60	60
CSO	1	12	12	12	12	12	12
CST	60	30	30	30	30	30	30
DFM	TAD	TIM	TIM	TIM	TIM	TIM	TIM
DFT	6	6	6	6	6	6	6
DSP	-12	-12	-12	-12	-12	-12	-12
DST	4	15	15	15	15	15	15
DMI	2	2	2	2	2	2	2
DLI	10	10	6	15	15	10	15
DTO	20	15	15	20	20	15	20
DTY	OFF	OFF	OFF	GAS	GAS	OFF	ELE
DSY	OFF	OFF	OFF	HI	HI	OFF	HI
SOD	10	5	5	5	5	5	5
DPD	0	0	0	0	0	0	0
DRN	60	0	0	90	90	0	90

Mnemonic	Default	INTEGRAL				REMOTE	
		High Temperature Counter Solid Doors	High Temperature Counter Glass Door	Meat Temperature Counter Solid Doors	Low Temperature Counter Solid Doors	High Temperature Counter Solid Doors	Low Temperature Counter Solid Doors
DDM	DEF	SP	SP	SP	SP	SP	SP
DDY	2	1	2	2	2	1	2
FID	YES	YES	YES	NO	NO	YES	NO
FDD	10	10	10	-5	-5	10	-5
FTO	1	1	1	1	1	1	1
FSD	0	0	0	0	0	0	0
FCM	TMP	NON	NON	NON	NON	NON	NON
FDT	-3	0	0	0	0	0	0
FDH	2	1	1	1	1	1	1
FT1	0	0	0	0	0	0	0
FT2	0	0	0	0	0	0	0
FT3	0	0	0	0	0	0	0
ATM	REL	REL	REL	REL	REL	REL	REL
ALA	-30	-30	-30	-30	-30	-30	-30
AHA	-15	-15	-15	-15	-15	-15	-15
ALR	-5	-3	-3	-3	-3	-3	-3
AHR	8	6	6	8	8	6	8
ATI	T1	T1	T1	T1	T1	T1	T1
PAD	60	60	60	60	60	60	60
ATD	90	60	60	60	60	60	60
ACC	0	0	0	0	0	0	0
ECO	YES	NO	NO	NO	NO	NO	NO
ESP	3.5	3.5	3.5	3.5	3.5	3.5	3.5
EHO	2.5	3	3	3	3	3	3
EH1	0	0	0	0	0	0	0
EPB	10	4	4	4	4	4	4
EDM	TAD	TIM	TIM	TIM	TIM	TIM	TIM
EDF	24	12	12	12	12	12	12
EDL	10	6	6	6	6	6	6
EDO	10	15	15	15	15	15	15
EDR	20	0	0	0	0	0	0
EFD	10	10	10	10	10	10	10
EFT	5	1	1	1	1	1	1
EFC	NON	NON	NON	NON	NON	NON	NON
ESD	90	60	60	60	60	60	60

Mnemonic	Default	INTEGRAL				REMOTE	
		High Temperature Counter Solid Doors	High Temperature Counter Glass Door	Meat Temperature Counter Solid Doors	Low Temperature Counter Solid Doors	High Temperature Counter Solid Doors	Low Temperature Counter Solid Doors
EFS	12	15	15	15	15	15	15
EMF	20	30	30	30	30	30	30
DSM	ALR	STP	STP	STP	STP	STP	STP
DAD	2	2	2	2	2	2	2
CSD	90	30	30	30	30	30	30
DOT	2	4	4	4	4	4	4
DI1	DOR	NON	NON	NON	NON	NON	NON
D1A	OPN	OPN	OPN	OPN	OPN	OPN	OPN
LCM	NON	NON	MAN	NON	NON	NON	NON
SR1	NON	FAN	FAN	FAN	FAN	FAN	FAN
SR2	NON	NON	LGT	DEF	DEF	NON	DEF
RL2	NON	0-1	0-1	0-1	0-1	0-1	0-1
ACN	0	0	0	0	0	0	0
ACF	0	0	0	0	0	0	0
AHS	YES	NO	NO	NO	NO	NO	NO
AHU	15	15	15	15	15	15	15
AFT	15	15	15	15	15	15	15
PMD	NO	NO	NO	NO	NO	NO	NO
MSV	230	240	240	240	240	240	240
2CD	0	0	0	0	0	0	0
SB	YES	YES	YES	YES	YES	YES	YES
BOS	YES	YES	YES	YES	YES	YES	YES
RHC	0	0	0	0	0	0	0
OSA	0	0	0	0	1	0	0
TE	NO	NO	NO	YES	YES	NO	YES
OSE	0	0	0	0	0	0	0
T3A	NON	NON	NON	NON	NON	NON	NON
OS3	0	0	0	0	0	0	0
D3A	OPN	OPN	OPN	OPN	OPN	OPN	OPN
AHM	NON	NON	NON	NON	NON	NON	NON
AHT	0	60	60	60	60	60	60
TLD	30	30	30	30	30	30	30
TDS	TAS	TAS	TAS	TAS	TAS	TAS	TAS
SIM	10	10	10	10	10	10	10
AVG	0	0	0	0	0	0	0

Mnemonic	Default	INTEGRAL				REMOTE	
		High Temperature Counter Solid Doors	High Temperature Counter Glass Door	Meat Temperature Counter Solid Doors	Low Temperature Counter Solid Doors	High Temperature Counter Solid Doors	Low Temperature Counter Solid Doors
SCL	oCn	oCA	oCA	oCA	oCA	oCA	oCA
PRT	RTU	RTU	RTU	RTU	RTU	RTU	RTU
ADR	1	1	1	1	1	1	1
RFP	YES	YES	YES	YES	YES	YES	YES

## Other Information

### Alarms/Warnings:

During operation the current temperature inside the appliance will be displayed. At certain times this will change to indicate a particular appliance operation or fault. The indicators you may see are as follows:

The temperature alarms are either relative to the set point or an absolute value. This is controlled by the value of parameter 'ATM'. Where the alarms are relative the low alarm is the set point minus parameter 'ALR' and the high alarm is the set point plus 'AHR'. When the temperature has been outside this value for the value of 'ATD' the relevant indicator will be displayed.

**hi** - The internal temperature of the appliance is higher than described above. Ensure that the door is closed and that the air flow inside is not obstructed by excessive or poor loading of product. The alarm will reset if the temperature falls to a normal level. If this does not happen please contact your authorised dealer or Foster Service.

**Lo** - The internal temperature of the appliance is lower than described above. Check to ensure that the appliance has not been loaded with product at a lower temperature than the normal appliance operating temperature. If this is not the case please call your authorised dealer or Foster Service.

**tA** - Air probe has failed.. Call your authorised dealer or Foster Service to arrange for this to be replaced. During this time the appliance cannot maintain an accurate temperature and all product should be removed and the appliance switched off.

**tE** - Evaporator probe has failed (not applicable to all models). Call your authorised dealer or Foster Service to arrange for this to be replaced.

**PF** - The mains power has been removed from the appliance for a period of time and has now been restored. This may have resulted in a rise in appliance temperature. Caution should be taken when using products stored within to ascertain whether these products are suitable for use. Upon restoration of the power supply the appliance will resume normal operation and the PF can be cancelled by pressing button 3 once.

**HC** - The condenser temperature is higher than it should be. If the appliance is being subjected to particularly high ambient temperatures steps should be taken to reduce this. If the ambient temperature is not high or reducing the temperature does not rectify the fault please contact your authorised dealer or Foster Service.

**Cnd** - The condenser clean period has expired. Please contact your authorised dealer or Foster Service.

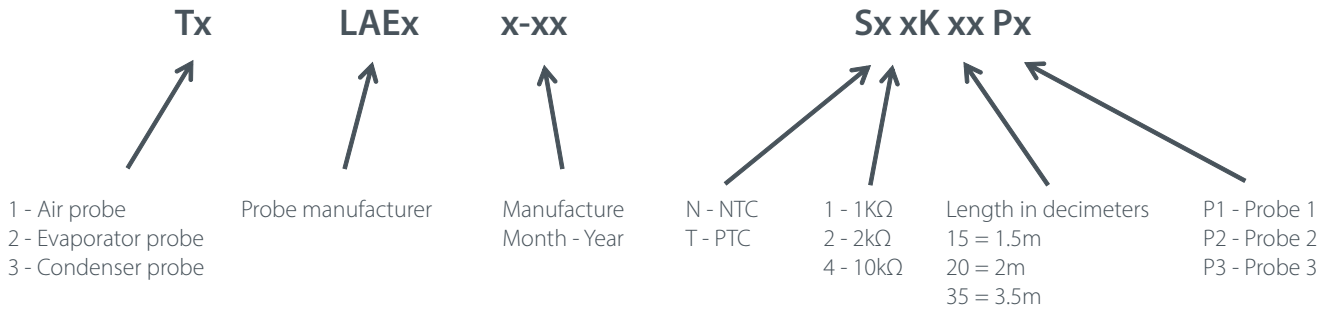
While in an alarm condition icon 5 will also be illuminated.

*(Some indications are only visible periodically during specific appliance operations such as defrost or when activated through use of the appliance).*

## Probe Information

The probe is a type 10k NTC. The probes are identical in characteristics with the T1 and T2 identification markings and different colours being for ease of identification and not for functional reasons. Please refer to the image below for probe identification.

### Probe Identification



### Probe Resistance

**NTC10K Temperature Resistance Table**

**SN4K**

TEMP. (°C)	R-low (KW)	R-mid (KW)	R-high (KW)
-30	109.522	113.347	117.294
-25	84.823	87.559	90.374
-20	66.27	68.237	70.255
-15	52.229	53.65	55.104
-10	41.477	42.506	43.557
-5	33.147	33.892	34.651
0	26.678	27.219	27.767
5	21.63	22.021	22.417
10	17.643	17.926	18.21
15	14.472	14.674	14.877
20	11.938	12.081	12.224
25	9.9	10	10.1
30	8.217	8.315	8.413
35	6.854	6.948	7.043
40	5.745	5.834	5.923

## Refrigerant Charge

The refrigerant charge weight can be found on the serial label within the appliance. Where this is not available please refer to the table below. The information below is correct time of printing but is subject to change without prior notice.

EP1/2H	110gms
EP1/2HRW	110gms
EP1/2M	80gms
EP1/2L	80gms
EP1/3H	110gms
EP1/3HRW	110gms
EP1/3M	108gms
EP1/3L	108gms
EP1/4H	90gms
EP1/4HRW	90gms
EP2/2H	92gms
EP2/3H	95gms



## Defrost Indication

During defrost icon 4 will be illuminated. The controller display will be determined by the value set in parameter 'DDM'.

To start a defrost manually press and hold button 3 for 5 seconds. This will turn off the appliance. Continue to hold down button 3 after the appliance has turned off. After a further 2 seconds the display will indicate a defrost has commenced (icon 4 illuminated) and the button can be released. While the defrost function is operating the display will be determined by the value set in parameter DDM.

The defrost function will operate until either the time set in parameter DTO or the temperature set in parameter DLI is reached. Where parameter TE is set to NO defrost will function on a time basis only. Upon completion of the defrost cycle the appliance will resume normal operation with the current temperature displayed.

## Relay Test

The controller contains a relay test function to enable the service engineer to operate individual relays, or a combination of relays for diagnostic purposes.

To access the relay test:

- Place the controller in standby so that button 3 is pulsing
- Press button 3 once so that buttons 1, 2 and 4 are activated and flashing
- Press and hold buttons 2 and 4 for 5 seconds until the display shows 'rLy' and buttons 1 to 5 are all illuminated

The controller is now in relay test mode.

- To activate relay 1 press button 1. Icon 1 will illuminate. To deactivate relay 1 press button 1 again and icon 1 will switch off.
- To activate relay 2 press button 2. Icon 3 will illuminate. To deactivate relay 2 press button 2 again and icon 3 will switch off.
- To activate relay 3 press button 4. Icon 4 will illuminate. To deactivate relay 3 press button 4 again and icon 4 will switch off.
- To activate relay 4 press button 5. Icon 8 will illuminate. To deactivate relay 4 press button 5 again and icon 8 will switch off.

Multiple relays can be activated simultaneously to enable diagnostics.

Relay function:

- Relay 1 - Red icon - Compressor
- Relay 2 - Green icon - function determined by parameter SR1. Evaporator Fan
- Relay 3 - White icon - function determined by parameter SR2. Where appliance has active defrost SR2 to will be set to DEF for defrost.
- Relay 4 - Amber icon - function determined by parameter RL2.

To exit the relay test function press button 3 once.

## Factory Reset

Where the controller was originally programmed by Foster and is dedicated to a specific appliance type it is possible to return the setting to they're original programmed state. If the controller was not programmed by Foster this function will return the parameters to the values in original factory settings.

To reset the parameters:

- Press button 3 to activate the display
- Press button 1 to enter the user level menu
- Press button 2 until the display shows 'rFp'
- Press button 3 once and 'rFp' will flash
- Press and hold button 3 for 3 seconds until the display shows 'End'

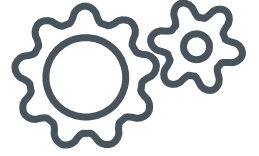
The original parameters as described above have now been restored.

If at any point the sequence of button operations and display indications are not completed the controller will, after 30 seconds resume operation with no changes to the parameters having been made.

# 3

## Maintenance

---



### Condenser Cleaning

The condenser is a Stayclear condenser which does not require cleaning as regularly as a traditional finned condenser may. Care should be taken when cleaning the condenser. Never use a wire brush, abrasive or corrosive materials to clean the condenser.

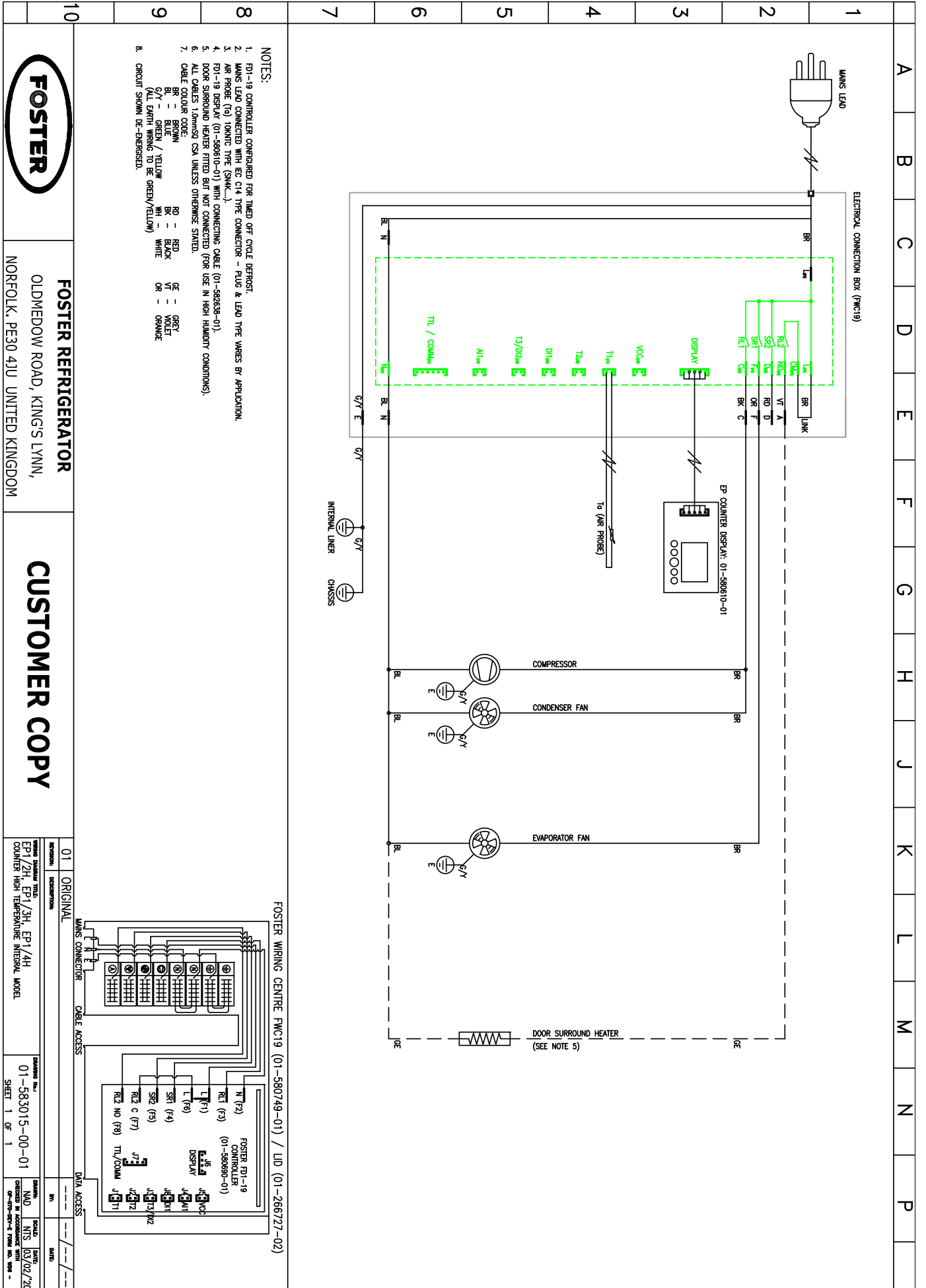
### Door Gaskets

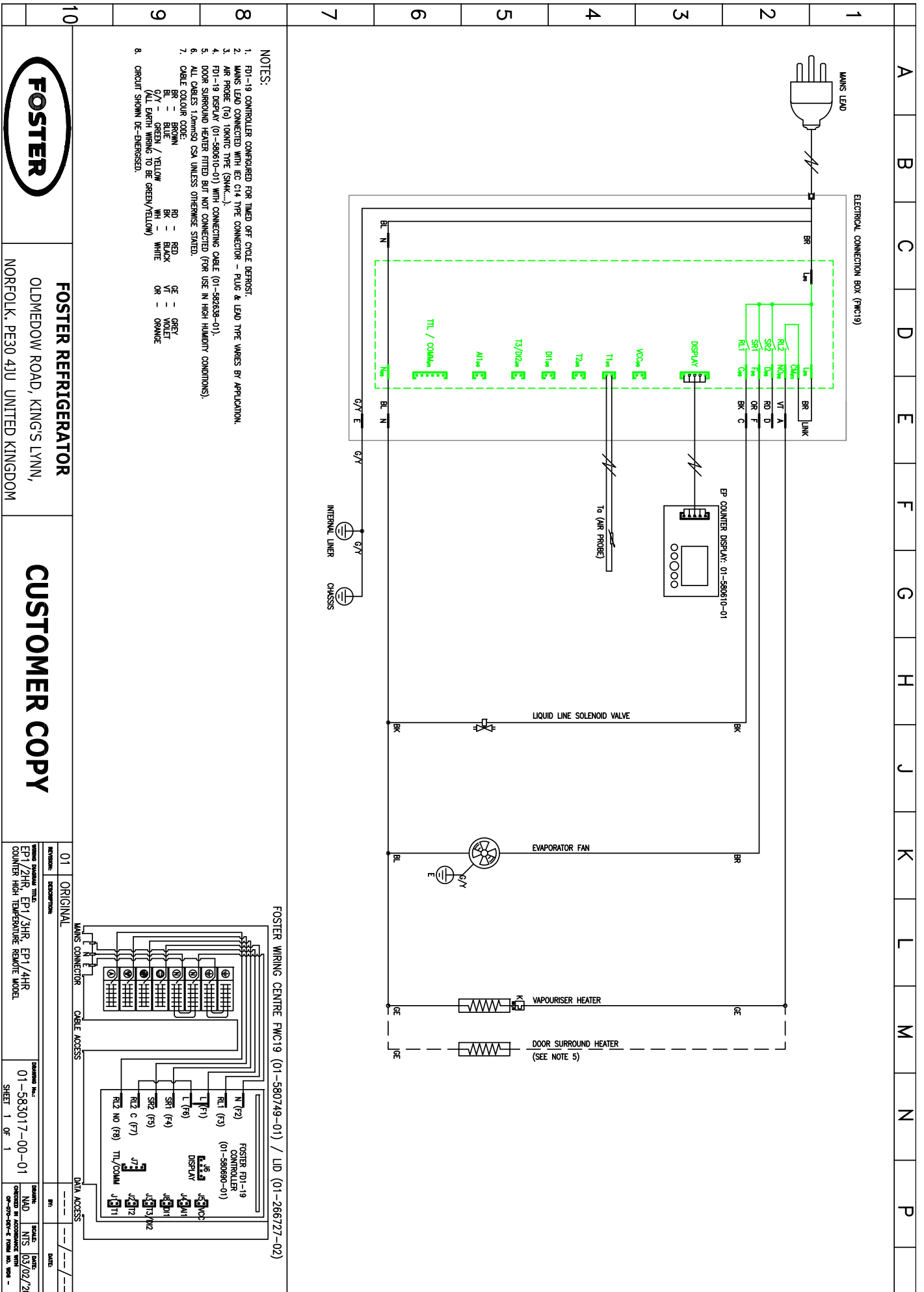
Door gaskets should be inspected periodically and cleaned where necessary with a warm damp cloth. Do not use aggressive cleaning materials on the door gaskets.

Where door gaskets are damaged or not sealing correctly, they are required to be changed. These can be removed by pulling the old gasket from its locating profile and pushing the new gasket into the same location. Where the gasket will not locate securely in the locating profile use a rubber mallet to locate the gasket securely.

# Wiring Diagrams

EP1/2H, EP1/2HRW, EP1/3H, EP1/3HRW, EP1/4H, EP1/4HRW Integral Condensing Unit

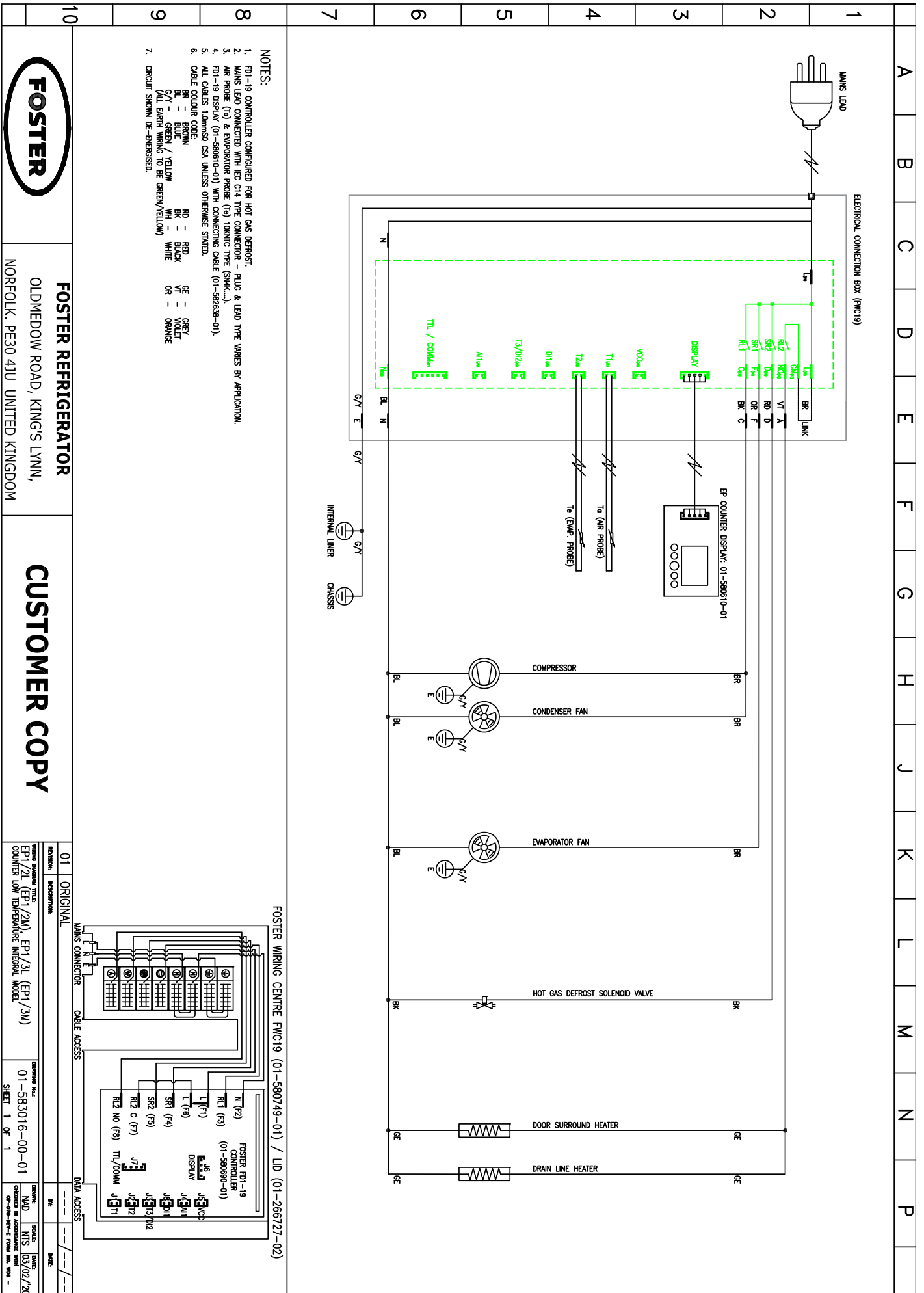


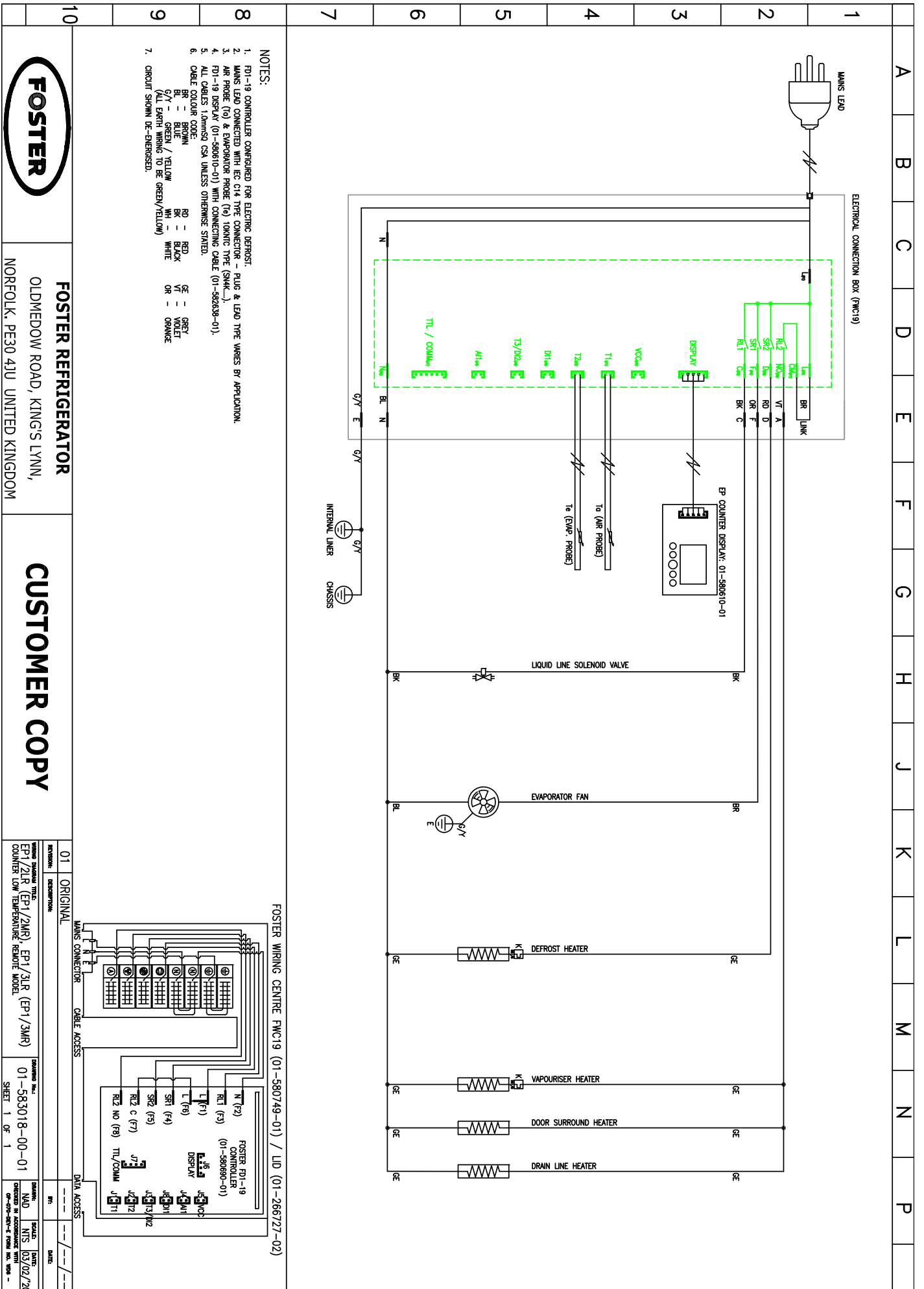


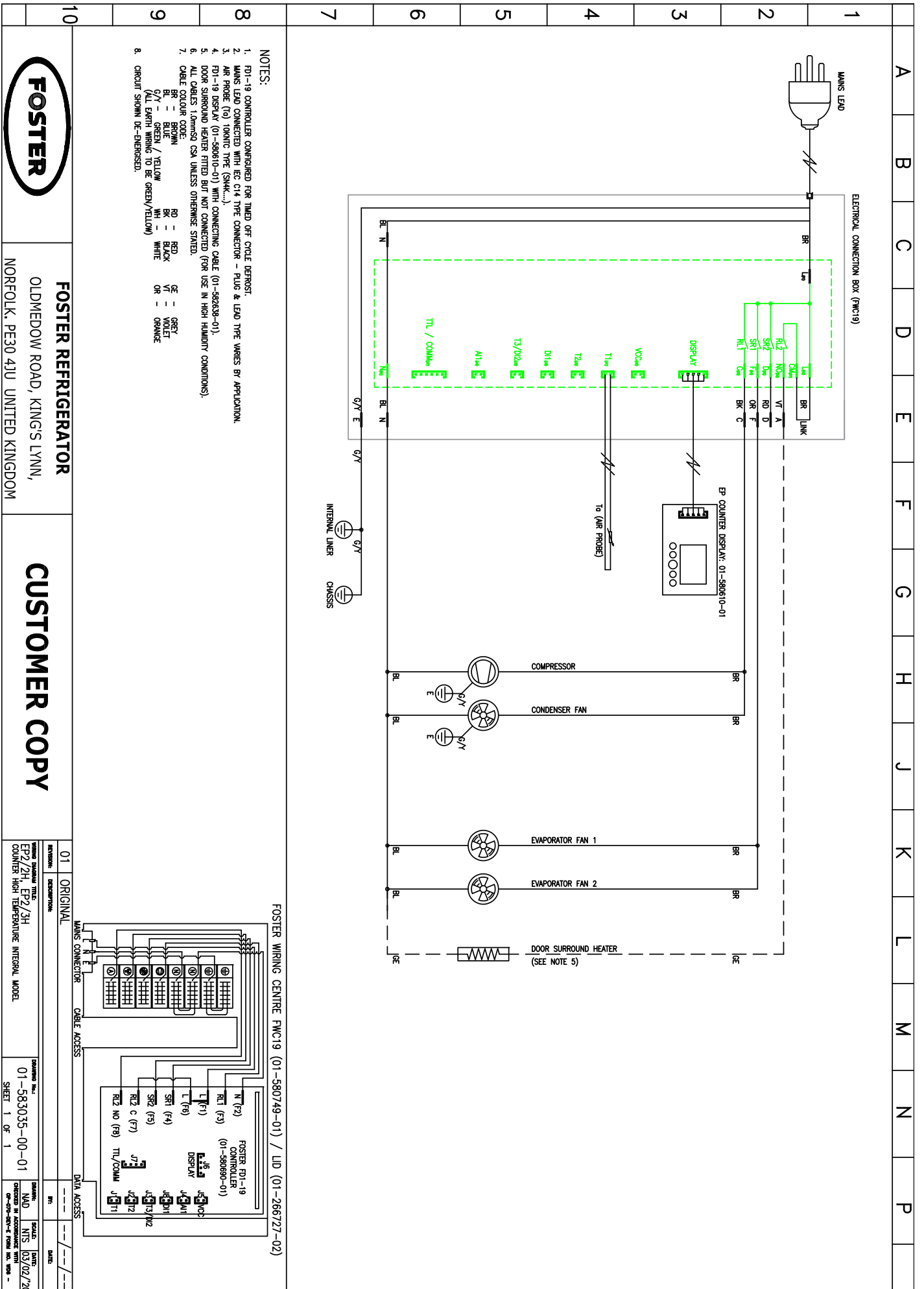
**FOSTER REFRIGERATOR**  
 OLDMEADOW ROAD, KINGS LYNN,  
 NORFOLK, PE30 4JU UNITED KINGDOM

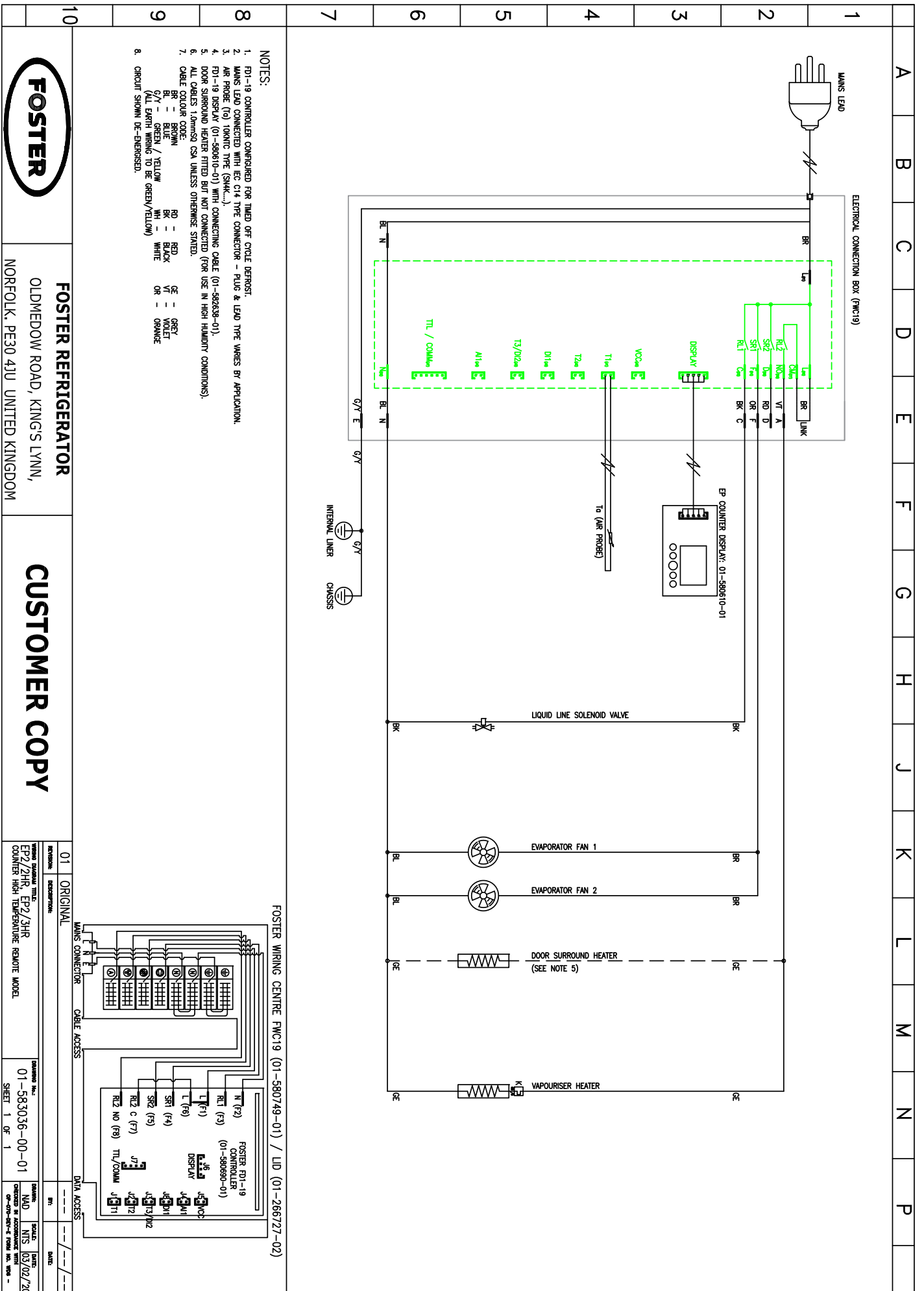
**CUSTOMER COPY**

<p>WIRING CENTER TITLE: EP1/2HR, EP1/3HR, EP1/4HR COUNTER HIGH TEMPERATURE REMOTE MODEL</p> <p>DATE: 01-583017-00-01</p> <p>SHEET 1 OF 1</p>	<p>DATE: 09/02/20</p> <p>BY: [Signature]</p> <p>CHKD: [Signature]</p> <p>DATE: [Signature]</p>
--	--



















By Appointment to  
Her Majesty Queen Elizabeth II  
Suppliers of Commercial Refrigeration  
Foster Refrigerator, King's Lynn



The Refrigeration Experts

**For more information:**

+44 (0) 1553 698485  
regional@foster-gamko.com  
fosterrefrigerator.com

**For service and spares:**

For service +44 (0) 1553 780333  
service@foster-gamko.com  
For parts +44 (0) 1553 780300  
parts@foster-gamko.com

Document ID code: 00-570506 v2